



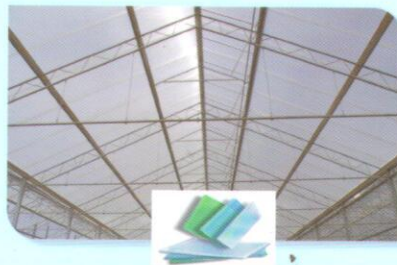
Jaichitra Inc.,

Your Local Supporter With Global Products

OUR GLOBAL PRODUCTS



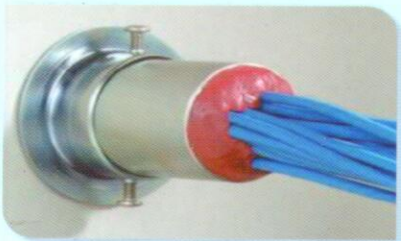
SHERA BOARDS & PLANKS



سابک SABIC - LEXAN (GE)
salbic POLYCARBONATE SHEETS



Sika CONSTRUCTION CHEMICALS /
EPOXY FLOORINGS & COATINGS



STI (USA)
PASSIVE FIRE STOP PRODUCTS



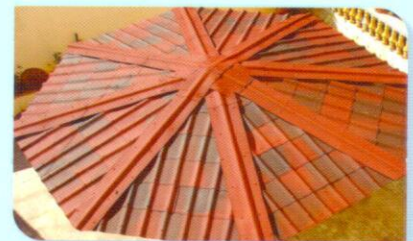
DUPONT
METAL ROOF INSULATION



3M 3M VHB Tapes &
PU SEALANTS



MOMENTIVE MOMENTIVE (GE)
SILICONE SEALANTS



Onduline CORRUGATED
SHEETS & TILES

CHENNAI

COIMBATORE

BANGALORE



We would like to introduce ourselves as **MORE THAN 17 YEARS EXPERIENCED COMPANY** to provide specialized products & services for the construction industry and we associated ourselves as **DISTRIBUTORS** with world leaders :

❖ LEXAN - POLYCARBONATE SHEETS	M/s. SABIC INNOVATIVE PLASTICS INDIA (P) Ltd. (Formerly GE PLASTICS)
❖ WATER PROOFING CHEMICALS / EPOXY FLOORINGS & COATINGS / GROUTS / STRUCTURAL REPAIRS	M/s. SIKA INDIA PVT Ltd. (a Swiss Co.,)
❖ 3M VHB TAPES & 3M POLYURETHANE SEALANTS	M/s. 3M INDIA Ltd.
❖ SHERA BOARDS & PLANKS	M/s. MAHAPHANT FIBRE-CEMENT PVT. LTD.,
❖ SILICONE SEALANTS	M/s. MOMENTIVE PERFORMANCE MATERIALS INDIA (P) Ltd., (Formerly GE Bayer Silicones)
❖ TC-STI-FIRE PROTECTION / STOPPING PRODUCTS	M/s. MURUGAPPA MORGAN THERMAL CERAMICS Ltd. & M/s. SPECIFIED TECHNOLOGIES INC.,
❖ ONDULINE - CORRUGATED SHEETS & TILES	M/s. OFIC BUILDING MATERIALS INDIA PVT. LTD.,
❖ DUPONT - METAL ROOF INSULATION	M/s. E.I. DUPONT INDIA (P) Ltd.

OUR POLICY

- ◆ Make available the best value products and services to our customers.
- ◆ Continues improvement in the quality of services and finding new innovative application areas
- ◆ Never ending obsession for quality and excellence in every activity.
- ◆ Delivering excellent customer support service including supply, facilitating in installation, commissioning, user training and telephone / web support.

VISION

To be a leading associate in our product range at any time and at any place.

QUALITY POLICY

We are committed to becoming the leader in our entire product range and to deliver high quality, innovative & customized products and services. We deliver defect free products, customers' need and services on schedule and on budget while maintaining compliance with applicable regulatory and industry standards.

Our contract division consists of qualified and well - experienced engineers who are all supported by a group of skilled applicators for undertaking the application of our entire range of products.

We invite you to have experience with us and enjoy a long term business association



LEXAN - POLYCARBONATE SHEETS

SOLID SHEETS		MULTIWALL SHEETS	CORRUGATED SHEETS
◆ Compact	◆ Margard	◆ Easy Clean	◆ 76/18 - GI Sheet Profiles
◆ Embossed	◆ Lexgard	◆ IR Block	◆ Asbestos Cement Profiles
◆ Opal White		◆ Metallic Colours	◆ Metal Sheet Profiles
		◆ Solar Control	

SOLID SHEETS

LEXAN - COMPACT - POLYCARBONATE SHEETS

- ◆ Offers clarity, stability, toughness, high impact Monolithic Sheets
- ◆ UV Coated on both sides.

Application: Roof lighting, Strip lighting, Atrium, Canopies, Machine Guard, Sound Barrier, Partition, Swimming Pool Covers, Display Windows etc.

Sheet Thickness: 1 / 1.5 / 2 / 3 / 4 / 5 / 6 / 8 / 10 mm

LEXAN - EMBOSSED POLYCARBONATE SHEETS

- ◆ Attractive textured surface
- ◆ Excellent light diffusion without losing transparency.
- ◆ High impact Sheets, UV Coated on both sides.

Application: Interior decoration, exterior privacy glazing and cladding, Sky light, Strip light for industrial usage, Shower Screens / Cubicles, Balustrades Doors, Roof Lighting, Walkway, Balcony Cladding Pyramids, Domes, Signage etc.

Sheet Thickness: 2 / 3 / 4 / 6 mm

SECURITY & GLAZING - LEXAN - MARGARD POLYCARBONATE SHEETS

- ◆ Abrasion resistant - silicone hard coating.
- ◆ Both sides UV resistant.
- ◆ Excellent optical property

Application: Highly useful for violence resistance door and windows, protective goggles & Suitable for exterior applications where unbreakable sheet is required.

Sheet Thickness: 3 / 4 / 5 / 6 / 7 / 8 / 9.5 / 12 mm

CORRUGATED SHEETS

LEXAN CORRUGATED POLYCARBONATE SHEETS

- ◆ High impact resistant sheets, both sides UV coated
- ◆ Good weathering, light weight, easy installation
- ◆ Tailor made to match specific profiled metal sheets

Application: Industrial strip lighting, wall cladding, green house, roof lights, parking lot, garden centers etc.

Sheet Thickness: 0.8mm / 1.2mm / 1.5 mm / 2mm / 3mm Asbestos Cement Matching Profile also available



MULTIWALL SHEETS

LEXAN MULTIWALL POLYCARBONATE SHEETS

- ◆ High impact resistant sheets, energy saving, cost effective sheets
- ◆ Both side UV coated various colors, thickness - from 6 mm onwards.

Application: Industrial North lighting, Skylights, Canopies, Domes, Plant / Warehouse, Stadium roofing, Glazing, Walkways, Roof lights etc.

Sheet Thickness: 5 / 6 / 10 / 16 / 25mm **Colours:** Clear / Bronze / Blue / Green / Metallic Grey, Blue, Green

LEXAN MULTIWALL - EASY CLEAN

- ◆ New innovative multiwall sheet, both side UV resistant materials.
- ◆ Cleaning of sheets by action of water alone and cost and frequency of cleaning the sheets are reduced.
- ◆ Provide High light transmission for a long time, various colors.

Application: Industrial North lighting, Skylights, Canopies, Domes, Plant / Warehouse, Stadium roofing, Glazing, Walkways, Roof lights etc.

LEXAN MULTIWALL - METALLIC GREY

- ◆ High impact resistant sheets, both side UV coated ◆ Provides aesthetics look.

Application: Ideal for roofing for hot climates, solar reflectivity, better thermal insulation, Glazing and thermal insulation in tropical area.

Colours : Grey / Blue / Green

LEXAN - SOLAR CONTROL & IR BLOCK

- ◆ New innovative Multiwall sheet, transparent, solar control glazing products.
- ◆ Reduce solar transmission and simultaneously offer high light transmission.
- ◆ Save energy costs for cooling and lighting buildings.
- ◆ 25% to 40% energy savings in a temperature controlled environment.

Application: Residential and commercial building glazing, roof domes, skylights, walkways, conservatories etc.

OUR IMPORTANT CLIENTELE

- ◆ Hyundai Motor India Ltd. ◆ L&T-ECC Division ◆ Golden Temple - Vellore. ◆ Sathya Sai Central Trust, Puttabarthy. ◆ Tata Blue Scope Steels Ltd ◆ Sri Kanji Kamakodi Shankara Hospital, Chennai.
- ◆ TVS Three Wheeler Plant - Hosur. ◆ Indian Machine Tools Manufacture Association ◆ Sagar Educational Trust ◆ The Kongu Vellalar Institute of Technology Trust ◆ Saveetha Dental College, Chennai
- ◆ St. Joseph's College of Engineering ◆ National Highway Authority of India ◆ C.A. Institute, Chennai. ◆ MRTS - Railways ◆ Kirby Building Systems India Ltd. ◆ ITD Cementation India Ltd.
- ◆ Lloyd Insulations (India) Ltd. ◆ Birla Planetarium, Chennai.

OUR PROJECTS





CONSTRUCTION CHEMICALS

An ISO 9001 Company Sika India Ltd is a part of the Sika World Group, headquarters in Switzerland, which is by far the global leaders in Construction Chemicals.

The Sika Worldwide Group is spread over in 50 countries around the world. In India, Sika India has manufacturing unit at Kolkata, Goa and in Tamilnadu. Selected products from Sika India using the same internationally famous brand names.

APPLICATIONS TYPES

Water proofing

- ◆ Arresting leakage and dampness for various locations in civil construction both for old and new projects.

Application : Sumps, Basement, Terrace, Overhead Tank, Toilets, Swimming Pool, Landscape, Sunshades, Reservoirs, Dams etc.

Epoxy flooring & coatings

- ◆ Providing Heavy duty jointless and aesthetic industrial flooring.

Application : Automobile Industries, Clean Rooms, Pharma industries, Chemical Industries, Food Processing Units, Show rooms etc.

Structural repairs

- ◆ Rehabilitation & Strengthening of distressed concrete structures using modern technologies.

Application : Bridges, Dams, Basement retaining walls, culverts, ceiling, columns and beams etc.

Joint sealants

- ◆ Providing flexible sealant to building joints.

Application : Expansion joints, control joints, old and new concrete joints and cracks etc.

Membrane treatment

- ◆ Providing water proofing treatment to all types of roofs and basements.

Application : Industrial roofs such as AC sheets, GI Sheets, Basement, Curved roofs, Slope Roofs, Concrete and Terrace Roofs etc.

Grouts

- ◆ Filling the honey combs, gaps at steel column base plates, voids in concrete joints, post fixing of steel rods into the concrete structures, epoxy and expandable non-shrink cementitious grouts etc.

Application : Concrete structures, heavy steel column, wharf portions, Bridges, Dams etc.

Our Important Clientele

◆ Integral Coach Factory (ICF) ◆ Southern Railway ◆ Atomic Research Centre ◆ MMTC ◆ Palar River - Bridge (IVRCL) ◆ Airport Authority of India ◆ Chennai Port Trust ◆ Chennai Petroleum Corpn. Ltd. ◆ ISRO ◆ CCCL ◆ Bridge & Roof India Ltd. ◆ L & T - ECC Division ◆ Simpson's ◆ India Cements Ltd ◆ Visteon Automotive ◆ Sono Koya ◆ Hindustan Motors ◆ Bella Premier Hygienic ◆ BHEL ◆ TVS - Shop Floors ◆ Hindustan Aeronautical Ltd ◆ GD Naidu Charities ◆ Flowserve India Controls (P) Ltd. ◆ Tata Johnson Controls Automotive Ltd. ◆ NOKIA - PERLOS ◆ Emerald Jewel Industry India Ltd. ◆ Uniworld logistics (P) Ltd.





PASSIVE FIRE PROTECTION & STOPPING SYSTEM

Specified Technologies Inc (STI) is an industry leader in developing innovative fire protection systems that help stop the spread of fire, smoke and toxic fumes. For over 30 Years STI management team has worked hand in hand with the construction industry to create simple solutions to complex fire stopping problems.

SALIENT FEATURES

- ❖ UL classified & FM approved in accordance with ASTM E814 (UL 1479)
- ❖ The EZ - Fire stop maintenance solution for firestopping cables, pays for itself in few changes.
- ❖ Patented 2 stage intumescent technology.
- ❖ Over 120 UL Classified solutions for curtain walls High traffic openings, expansion joints.
- ❖ UL systems are available upto 4 hour rated for

RANGE OF PRODUCTS

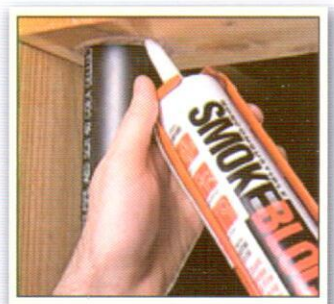
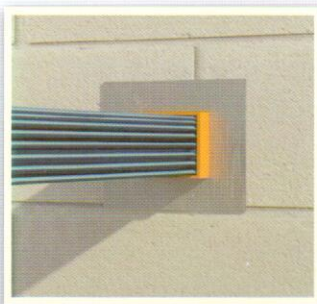
- a) Fire Stop Sealants
- b) Fire Stop Sprays & Joint Sealants
- c) Construction Joint System
- d) Fire Stop Collars
- e) Wrap Strips & Restraining Collars
- f) Pathways
- g) Fire Stop mortar & Pillows
- h) Fire Protective Cable Coating
- j) Intumescent Tape (For Fire Door applications)

OTHER RANGE OF PRODUCTS

- 1) Electrical rising main and cable shaft areas.
- 2) Ductwork - Kitchen Extract, Grease, Air Ventilation, HVAC & Plumbing Ducts
- 3) Cable Tray, Conduit & Cable Shaft area.
- 4) Firestop - Construction / Safing Joint / through penetration
- 5) Intumescent strips for fire door gasket application.
- 6) Structural Steel Protection
- 7) Electrical Circuit Protection

OUR IMPORTANT CLIENTELE

- ◆ Royala Corporation (P) Ltd., ◆ East Coast Construction Industries Limited ◆ Apollo Hospitals Limited
- ◆ Vellore CMC Hospital ◆ Tecpro Systems Ltd., ◆ Elnet Technologies Ltd., ◆ RR Towers IT Park



SHERA

BOARDS & PLANKS

SHERA Plank is a unique fibre cement composite of natural fibers bonded tightly in a high-grade Silicate siding acquires impressive toughness, yet remains flexible and dimensionally stable. It is Cellulose cum Asbestos, fibre glass, fibers and non - Formaldehyde.

SHERA's embedded beauty with added resistance against fire, termite, and moisture make it an apt material for varying application in flooring, siding ceiling and roofing.

Features:

1. Weather resistance, Immune to water damage, Fire resistance
2. Sound Insulation, Not Brittle, Low Shrinkage
3. Termite resistance, High work-ability, Non-Asbestos



Uncolored



Afrosia Brown



Cherry Red



Walnut



Golden Sand Teak

Shera Plank:

1. Teak
2. Cassia
3. Straight grain

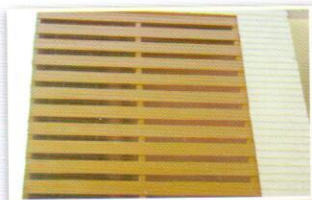
Application:

- ❖ Gate covering
- ❖ Wall cladding
- ❖ Front Elevation
- ❖ Elevation facade, Use to anywhere, Etc...

Shera Board:

Application:

Shera reciting the green concept, offers contemporary & versatile products for Floorings, Slideings, Ceiling, Partitions & Cladding.





VHB TAPES & PU SEALANTS

3M VHB Tapes

From transportation to appliances & electronics, from metal fabrication & Signage to structural glazing & architectural panels - 3M™ VHB™ Tapes offer an array of bonding solutions for diverse industry verticals to customers worldwide. 3M VHB Tapes is an alternative method which offers superior aesthetic qualities over conventional mechanical fasteners and welding.

Applications

- ◆ Instant and permanent bonds to painted & unpainted metals
- ◆ Plastics
- ◆ Vinyl and Glass.

WHY 3M POLYURETHANE SEALANTS

From sealing the sedimentation tanks of sewage treatment plants to filling expansion gaps in concrete. 3M's Polyurethane Sealants has the ideal product for sealing and bonding. Besides a broad selection of polyurethane and high performance hybrid adhesives and sealants, there are primers, boosters, cleaners and applicator guns to help cut your costs, improve productivity and get the job done perfect.

Salient Features Of 3M Polyurethane Sealants

- ◆ During application no mixing required / easy process.
- ◆ Curing unaffected at wider temperature range
- ◆ Shrinkage Negligible
- ◆ Consistency in formulation - remains elastic through out life
- ◆ No bleeding or staining in Hybrid Sealant range
- ◆ No Odour
- ◆ No Pot life Issues
- ◆ Good-Excellent with Hybrid range.
- ◆ Good Elastic Recovery
- ◆ Good Tear strength
- ◆ Good adhesion to Un-primed surfaces



CLEAR VHB TAPE



STRUCTURAL GLAZING TAPE



MIRROR MOUNTING TAPE



EXTREME SEALING TAPE



MASKING TAPE



SURFACE PROTECTION TAPE



PRIMER 94 - ADHESION PROMOTER



525 Grey



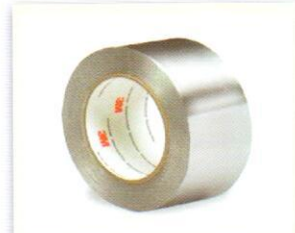
540 Black / White



Hybrid Sealant



Concrete Repair System



Aluminum foil tape

Onduline® CORRUGATED SHEETS & TILES

CORRUGATED SHEETS & TILES

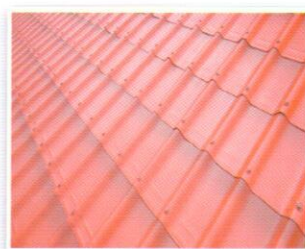
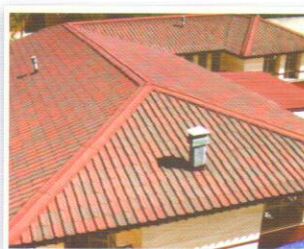
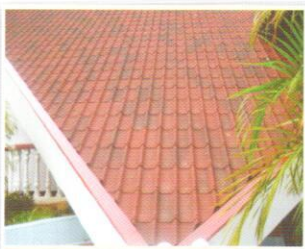
Onduline sheets are extremely tough, Lightweight, corrugated roofing and wall cladding material manufactured from bituman saturated organic fibers under extreme heat and pressure. Today our roofing systems are used widely across the world from the tropics to the arctic for residential, commercial, light industrial and agricultural applications.

Onduvilla corrugated tiles are designed to give roofs a pleasant look reminiscent of traditional clay tiles, while at the same time being extremely light. An exclusive 3 tone painting system ensures a natural texture on the tiles. These tiles are made of a single layer of organic fibers and bitumen combined with resin.

Onduline sheets are available in standard sizes of 2m x 0.95m. The technical parameters of the sheet are shown.

Onduline Sheets	
Length	2000 mm
Width	950 mm
Area per sheet	1.9 m ²
Thickness	3 mm
Width of corrugation	95 mm
Height of corrugation	38 mm
# of corrugations per sheet	10
Weight	6.4 kg (3.3 kg per m ²)
Colour	Red, Green, Brown & Black

Onduvilla Tiles	
Width	106 cms
Length	40 cms
Thickness	3 mm
Wave height	40 mm
Weight per tile	1.27 kgs





METAL ROOF INSULATION

DuPont™ Tyvek® Weatherization Systems comprise a vapour-breathable, tough and durable membrane manufactured from spun-bonded polyolefin. This membrane keeps insulation dry and performing effectively for a long time by minimizing condensation and other moisture-related problems.

Products

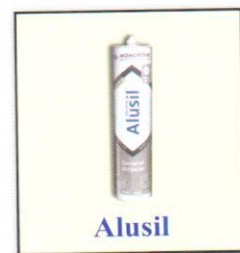
- ▶ Dupont tyvek Subtex ▶ Dupont tyvek Solid
- ▶ Dupont tyvek Reflex
- ▶ Dupont tyvek VCL Sd2 ▶ Dupont tyvek Supro



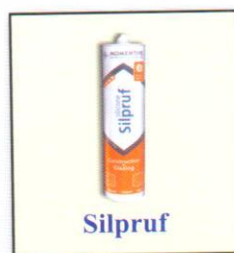
MOMENTIVE
performance materials

SILICONE SEALANTS

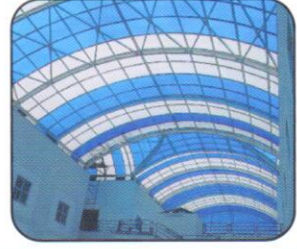
CONSTRUCTION & STRUCTURAL GLAZING SEALANTS



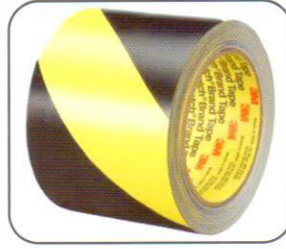
CONSTRUCTION & STRUCTURAL GLAZING SEALANTS



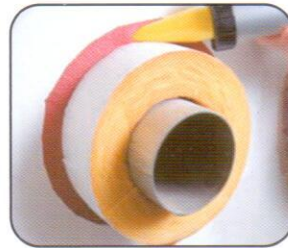
SABIC LEXAN - Polycarbonate Sheet



3M - VHB Tapes & Pu Sealants



STI - Fire Stopping Products



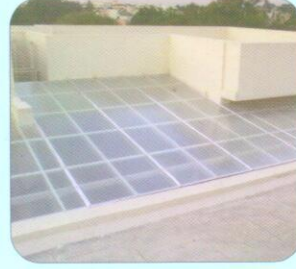
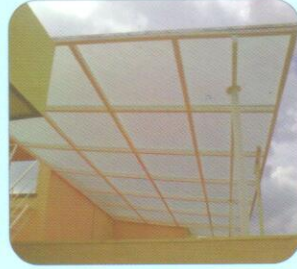
DUPONT - Metal Roof Insulation



SHERA - Boards & Planks



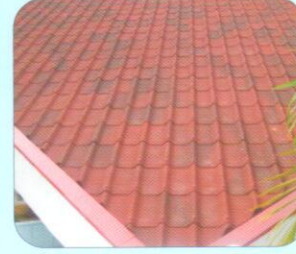
SABIC LEXAN - Polycarbonate Sheet



SIKA Construction Chemicals & Epoxy Flooring



Onduline - Roofing Sheets and Tiles



Coimbatore

#339, Sundara Gounder Thottam,
Jayaprakash Nagar Road,
Sanganoor Main Road, Ganapathy (P.O),
Coimbatore - 641006. INDIA
Mob : +91-9843032729 Telefax : 0422 - 2333822
E-mail : coimbatore@jaichittra.com
www.jaichittra.com

Corporate Office

Chennai

No.52/7, First Floor, ESPEE Complex,
52, Brindavan Street, West Mambalam,
Chennai - 600033. INDIA
Phone : 044 - 32909328 / 24734458
Telefax : 044 - 24730766
E-mail : chennai@jaichittra.com
www.jaichittra.com

Bangalore

No.28,3rd Cross,
Annipura Main Road, Sudhama Nagar,
Bangalore - 560027. INDIA
Phone : 94484 9095 I
Telefax : 22222537
E-mail : bangalore@jaichittra.com
www.jaichittra.com

Chennai - Show Room

193/12, Shop No 9 & 10, Jawaharlal Nehru Street,, 100 feet road,
(near Hotel Vijay Park) Arumbakkam, Chennai - 600106 Ph: 9444083402